

Solar PIR Sensor Security Light

USER GUIDE

Model SMS001

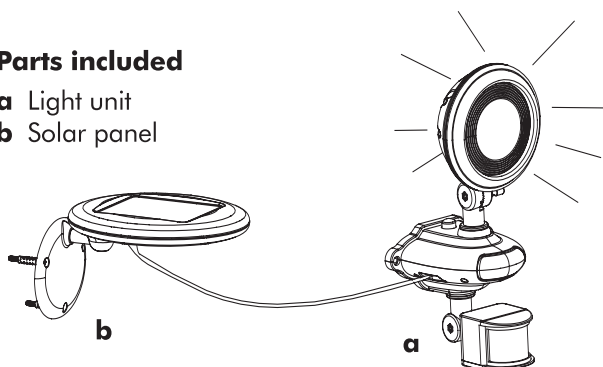
How does it work?

During the day, the exterior mounted solar panel converts daylight into electricity and recharges the batteries within the light assembly.

Built-in photo cell prevents daytime operation so it's charged and ready to go when darkness falls.

Parts included

- a Light unit
- b Solar panel



How to determine where to mount your solar PIR sensor light

Although the unit is weatherproof it has not been designed to take the full force of nature.

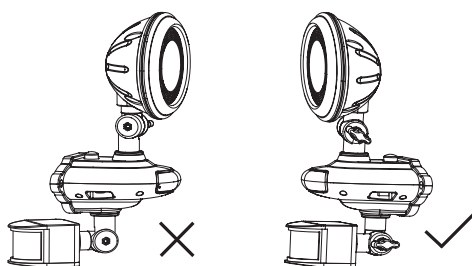
Please note when positioning the light unit, wherever possible try to protect it from the elements as much as possible, preferably under a roof overhang etc.

Positioning of the solar panel should be south facing and tilted to an angle so as much sun as possible can be absorbed by the panel.

Installation

1. Light unit

When deciding where to mount this unit, keep in mind that the motion sensor that activates the light has a field of vision of between 0.5 and 10 metres (in front of the light) and about 120° (horizontal).



Note: To avoid water entering into the inside of the motion sensor, it is strongly recommended that the switch panel on the underside of the PIR faces downwards when installing the main unit.

Detection Area

See Figure 1 below.

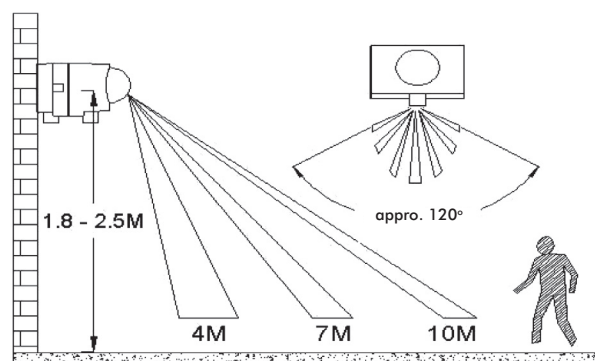


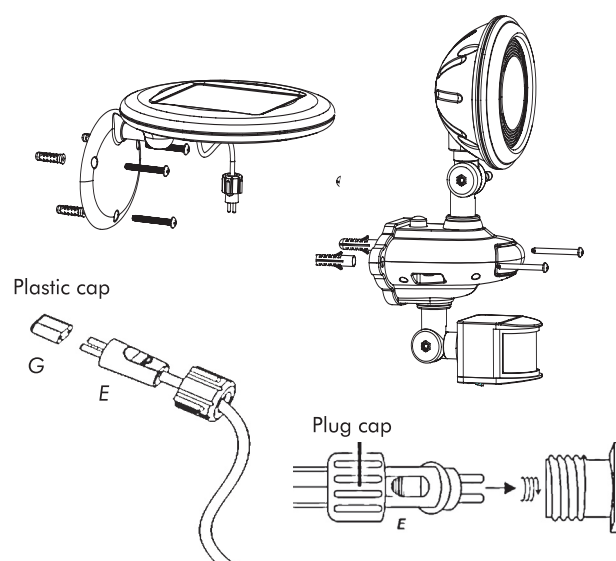
FIG. 1 DETECTION AREA

2. Solar panel

The Solar panel is the power source for the SOLAR PIR SENSOR LIGHT. It converts the sun's energy into electricity that charges the battery stored in the Light Unit. Mount the Solar panel onto a solid surface with supplied screws.

Note: The location of the Solar panel must be within a distance of 6' of the main unit, due to the length of the cable.

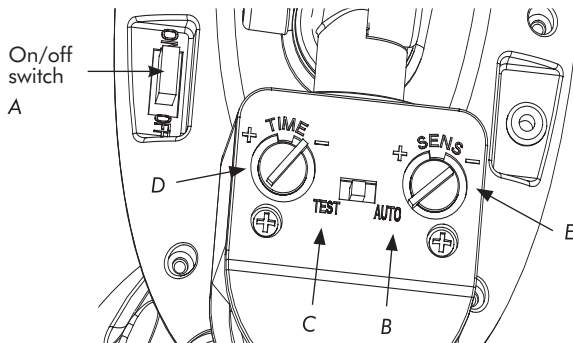
Now carefully route the cable to the Light Unit, remove the plastic cap (Part G) on plug end (Part E) and attach the plug end (Part E) of the Solar panel to the Light Unit by inserting it and turning the Plug Cap clockwise until it is secure.



continued overleaf

Final Adjustment and Start-Up

On the switch panel there are 2 slide switches, ON/OFF & AUTO/TEST.



When OFF

Position for extended periods of non-use

When ON (switch A in diagram above)

- AUTO position for normal operation (position B above)
- TEST position for activating the light in day time. (position C above)

First Time Use

This Security Light is supplied with rechargeable AA batteries fitted into the Light Unit. As supplied, these batteries will normally be flat. We therefore recommend that when fitted from new, the ON/OFF switch should be left in the OFF position for the first 4 days to ensure the solar cell fully charges the batteries.

How to Adjust the Motion Sensor

After the initial charge as noted above, slide the switches to the 'ON' and 'AUTO' positions. On the switch panel there are 2 adjusting dials, 'TIME' and 'SENS'.

1 'TIME' ADJUSTMENT (dial D in diagram above)

This sets the duration for which you wish the Light Unit to stay lit, once motion stops in the field of vision. This can be adjusted from around 30 seconds to 5 minutes.

2 'SENS' ADJUSTMENT (dial E in diagram above)

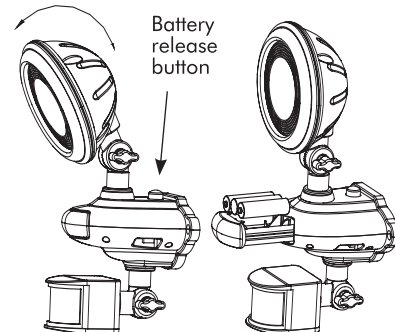
This controls the sensitivity of the PIR. Depending on what distance you need the PIR to cover, you can adjust its sensitivity from around 4 to 10 metres. (See figure 1 on front of this sheet)

Adjustment of the Lamp head

Point the lamp head to face the area you wish to illuminate.

Battery Replacement

Slide the power switch A to the 'OFF' position. Press the button behind the lamp head and the battery compartment tray will be extended automatically. Remove old Batteries and replace with new Ni-Mh AA 900mAh rechargeable batteries. Push back the battery compartment. Repeat the 'First Time Use' process above.



WARNING: Do not dispose of Ni-Mh batteries in the regular waste, or by fire, as batteries may leak or explode. Do not open, short circuit or mutilate batteries as injury may occur. Preserve our environment by recycling Ni-Mh batteries or disposing of them in accordance with local authority regulations. Do not mix old and new batteries. Do not mix Alkaline, Standard (Carbon-Zinc), or rechargeable (Nickel Metal Hydride) batteries.

Maintenance

Batteries: to extend the life of the rechargeable batteries switch the ON/OFF switch OFF for a 4 day period twice per year. Once the batteries have failed (approx 2 years) replacements can be purchased from most electrical retailers or from Solar Technology International Ltd.

Solar Assembly: clean the solar cell from time to time. Use only a soft/damp cloth – do not use detergents.

Troubleshooting

If the Light Unit does not light up, please check that the batteries are all located securely in their housing and each battery terminal makes good contact (it is possible that a battery may have worked its way loose in transit).

Warranty

The light is supplied with a 24 month warranty, excluding the batteries. Should a failure occur during this time Solar Technology International Ltd will repair or replace any faulty part, at its discretion.

Solar Technology International Ltd does not accept liability for any 3rd party damage how so ever caused or any costs associated with the return of faulty products.

To make a warranty claim please telephone Solar Technology International Ltd on +44 (0) 1684 774000.

These warranty conditions in no way affect your statutory rights. A full set of Solar Technology International Ltd terms and conditions are available on request.